

Central Brass Company, Inc.
3325 S. Garfield Ave.
Commerce, CA 90040
(800) 321-8630
www.centralbrass.com

Tools:



**Model Number: 3137-AN2, 3137-AVN2,
3137-DAN2, 3137-DAVN2**

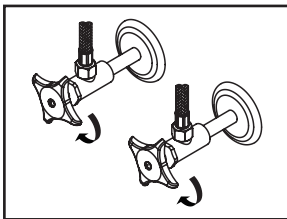


Warnings and Notes:

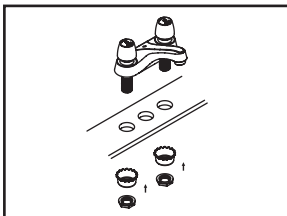
Check with local plumbing code requirements before installation.
This product should be installed by a local listed plumber.
Do not use plumbers putty on threads.

Installation Steps:

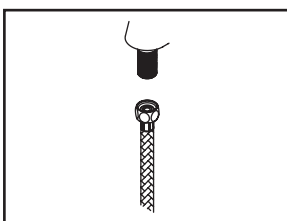
Slow-Close Two Handle Lavatory Faucet



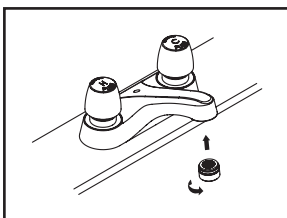
(1) Shut off water supplies. Remove old faucet. Clean mounting surface in preparation for new faucet.



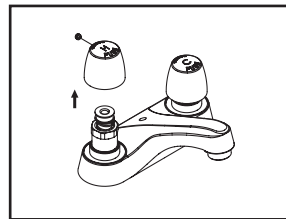
(2) Place the faucet in position on the sink. Apply plumbers putty under the faucet. Install washer on shanks and tighten with locknut from underneath of the sink.



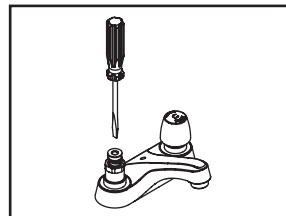
(3) when using stainless steel braided faucet supply hose; this faucet requires one end of the supply hose to have a 1/2" female IPS connection. The other end of this supply hose must match the thread on the water supply valve under your sink. Once you've identified the required size, carefully follow the manufacturer's installation instructions for each hose.



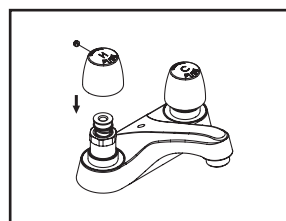
(4) Important: After installation is complete, remove aerator. Turn water supplies on and allow both hot and cold water to run at least one minute each. While water is running, check for leaks. Turn off water and replace aerator.



(5) The slow close cartridge is factory preset timing to 10 seconds@60 PSI. Depending on the inlet water pressure and water temperature this timing can vary. If timing need to be changed, remove the handle by loosening Allen screw.

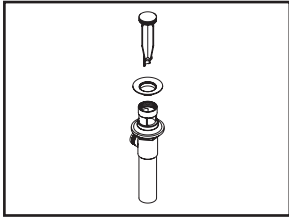


(6) With the help of flat head screwdriver, loosen the screw to decrease the timing and tighten the screw to increase the timing. The timing can be adjusted from 0 to 60 seconds depending on the inlet pressure and water temperature.

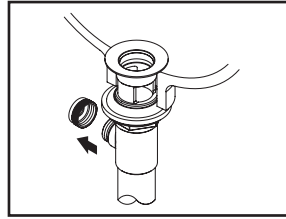


(7) Once the satisfactory timing has been adjusted, install the handle by tightening Allen screw.

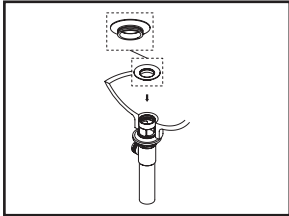
Pop-up Drain Installation:



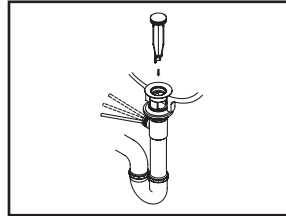
(1) Remove pop-up flange from body



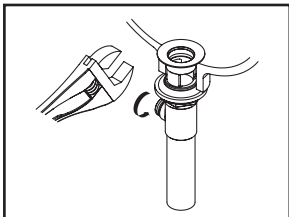
(5) Remove pivot rod nut from pop-up body, ensure the washers is in place, insert pivot rod, tighten pivot rod nut back to pop-up body.



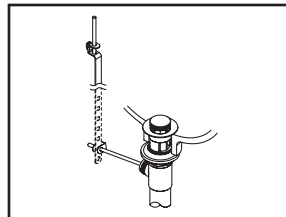
(2) Place a ring of plumbers putty on the bottom of flange.



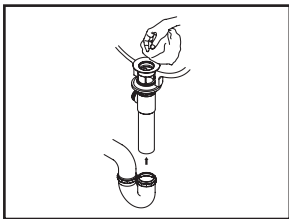
(6) Push pivot rod down, insert drain plug carefully. Test to ensure drain plug works properly.



(3) Insert pop-up flange through drain hole and attach flange to body. Use Teflon tape to thread tail piece to Pop-up drain body. Ensure the pop-up outlet faces towards the back of the sink. Tighten the locknut securely with a wrench. Do not overtighten.



(7) Connect lift rod strap to pivot rod by using clip. Tighten the thumbscrew to connect lift rod strap to pop-up lift rod.



(4) Remove the excess plumbers putty. Connect the trap (check manufacturer's instructions for installation).