

Tub Closures

PRESFLO®

SPECIFICATIONS

FEATURES:

- Brass strainer body for cast iron or plastic tubs.
- Designed for heavy-duty use in hotels, motels, and rental properties.
- Replaceable drip-proof Buna-N-Seal.

PATENTS:

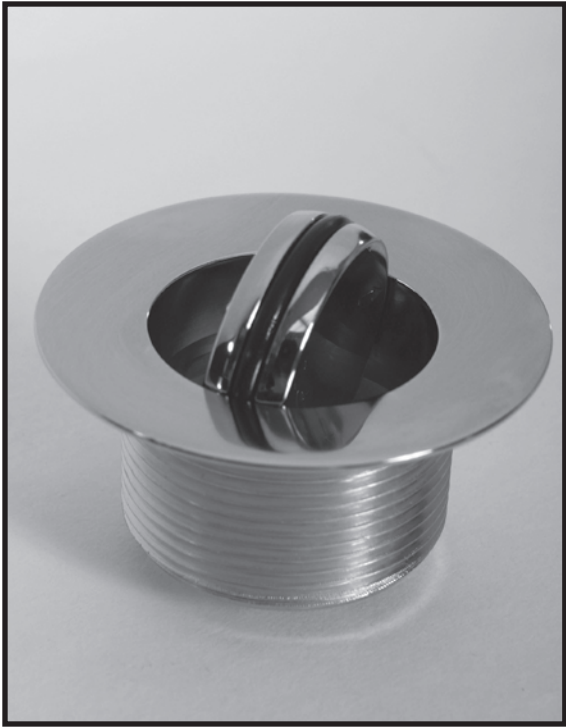
- U.S. Pat. No. 4,457,030

OPERATION:

- Push down on any edge of stopper to open and close.

THREAD SIZE:

- Replacement sizes to fit most bath wastes.



**PRESFLO®
Tub Closure
PARTS LIST**

WITH COARSE-THREAD BODY:

1. 11145__*.....PRESFLO® Stopper, plastic, for CT body
2. 11132.....PRESFLO® O-Ring Seal for 11145 stopper
3. 11060__*.....PRESFLO® Strainer Body, 1.865"-11.5-1.25"
4. 96039.....Suction Cup for removing stopper
*11140CPPRESFLO® Stopper, brass, CP and PB only

WITH FINE-THREAD BODY:

1. 11155__*.....PRESFLO® Stopper, plastic, for FT body
2. 11131.....PRESFLO® O-Ring Seal for 11155 stopper
3. 11070__*.....PRESFLO® Strainer Body, 1.625"-16-1.25"
4. 96039.....Suction Cup for removing stopper
11150__.....PRESFLO® Stopper, brass, all PF finishes

*Please indicate desired finish.

Finishes Available in the PRESFLO® Series:

Trim Kits:	38350 38360	38370	38375	38380	38385	38395
CP - Chrome Plated	•	•	•	•	•	•
AB - Antique Brass						
AP - Aged Pewter	•	•	•	•	•	
BB - Brushed Bronze	•	•	•	•	•	
BN - Brushed Nickel	•	•	•	•	•	
BO - Bone						
BS - Biscuit						
BZ - Oil-Rubbed Bronze	•	•	•	•	•	
CB - Chrome Brushed	•	•	•	•	•	
NP - Nickel Polished	•	•	•	•	•	
PB - Polished Brass	•	•	•	•	•	•
PN - Pearl Nickel	•	•	•	•	•	
WH - White						
WI - Wrought Iron	•	•	•	•	•	



For More Information Contact:
WATCO Manufacturing Company
 1220 South Powell Road
 Independence, MO 64057-2724
 Ph. 816-796-3900 • FAX 816-796-0875
 www.watcomfg.com

